

For your safety and continued enjoyment of this product,
Always read the instructions carefully before using.

Special Features



This lighted makeup mirror uses Lifetime Energy Saving LED bulbs. Replacement bulbs are not required.



Built-in touch sensor switch power mirror ON/OFF.



Freely adjustable, just fix it to whatever position you want.



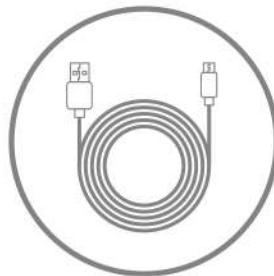
USB charging is more environmentally friendly.

Packing List



LED Makeup Mirror

①



USB Cable

①



Product Instruction Manual

①

Product Specifications

LED Quantity	DC Voltage	Power	Using Time
36pcs	3.7V	4.5W	1.5h

How to Use the Mirror

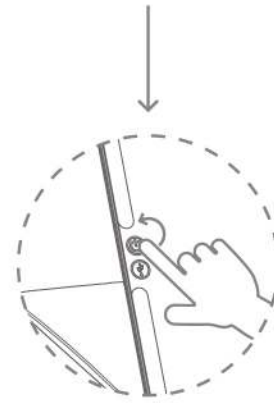


This mirror is powered by a 1000mAh li-polymer battery. Please make sure it is fully charged and turned ON before use.

Tap the power touch sensor on the left side of the mirror to turn it on.



To switch off the mirror, simply tap the power touch sensor.



To adjust the brightness simply hold down the power touch sensor until desired brightness is achieved.

Charging Your Mirror

- ① Connect the micro USB port with a 5V power supply or computer by the provided USB cable.
- ② When the mirror is charging, the indicator will light up. Once mirror is fully charged, the indicator light will automatically turn off.
- ③ When charging the mirror, be sure the mirror is turned off.



Safety Instructions

- ⓘ ALWAYS KEEP AWAY FROM WATER
Do not place or store appliance where it can fall or be pulled into a tub or sink. If the appliance falls into water, DO NOT REACH INTO THE WATER.
- ⓘ Do not use while bathing or in the shower.
- ⓘ Close supervision is necessary when any appliance is used by or near children or people with a physical/mental disability.
- ⓘ Do not operate this appliance if the appliance malfunctions or has been damaged in any manner.
- ⓘ No repairs should be attempted by the consumer.
- ⓘ Use appliance only for the intended use as described in this instruction book.
- ⓘ Be sure mirror is not in a position where it can reflect sunlight.
- ⓘ Turn switch to OFF position before storage.

Storage Instructions

- ① Turn the product OFF before storage via the ON/OFF Touch Button.
- ② Be sure direct sunlight does not strike mirror when left unattended.
- ③ Store the mirror in cool and dry area.
- ④ For safety reasons, please make sure the mirror is out of reach of children.